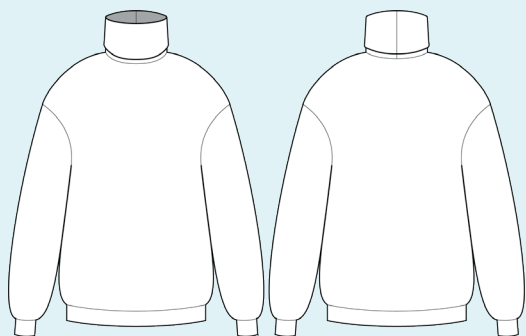


ELINA PATYKOVA
ВЫКРОЙКИ

Instructions
for sewing

Turtleneck sweater

#патыкова_свитер



Materials and notions



- sweater knit
- silicone tape 4-6 mm (1/8-1/4") wide
- matching thread
- Jersey 80-90 or Stretch 80-90 needles

If you are not sure about the fit of the garment, it is recommended to sew a muslin with similar properties (elasticity, thickness, drape) first. This will allow you

to adjust the length, width and fit of the garment and save time.



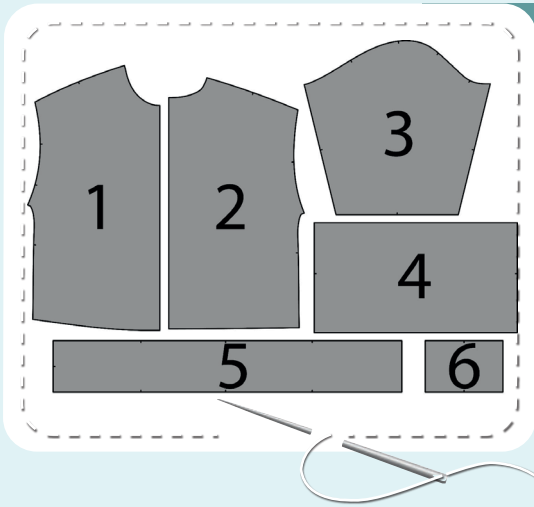
To find out how long a piece of fabric to take, you should place the pattern pieces onto the table, the floor or bedspread, pre-measured width equal to half the width of the selected fabric. Place the pieces, caring the direction of the grain line, their number, i.e., the way you will place them when cutting. Measure the length of the pattern pieces fit, add to this length 5% for the fabric shrinkage - this will be the required amount of fabric for the project. Before beginning your sewing project, wash the fabric in warm

water, dry and iron it.

How to cut: Print and glue all the paper patterns. When printing, do not forget to check the size of the test square. Place the paper pattern pieces onto the fabric. It's important to check that the grain is straight. Pin the paper pattern pieces to the fabric gently and cut the fabric along the outline. Note: seam allowances are already included. Transfer all the marks from the pattern onto the wrong side of your fabric.



Now you have



TURTLENECK SWEATER PIECES

1. front - cut 1 on the fold
2. back - cut 1 on the fold
3. sleeve - cut 2
4. collar - cut 1 on the fold
5. hem band - cut 1
6. sleeve cuff - cut 2

Construction

Symbols



straight stitch



the stitch length in (mm)



flat lock stitch



zigzag stitch



the stitch width in (mm)



3-Step Zigzag Seam Finishing



unilateral zipper presser foot



universal presser foot



invisible zipper presser foot



pinning

You should lockstitch the seam and trim the thread tails or tie the seam thread tails and hide them into the seam after sewing a serger stitch or cover seaming chain stitch.



double welting (piping) presser foot



3-thread serger stitch



4-thread serger stitch

NOTE

A

4-thread serger stitch

If you do not have a serger, you can use stretch stitches available on your sewing machine, or at least, a zigzag stitch.

B

3-thread serger stitch

If you do not have a serger, you can replace it with an overedge stitch, or a zigzag stitch.

C

flat lock stitch

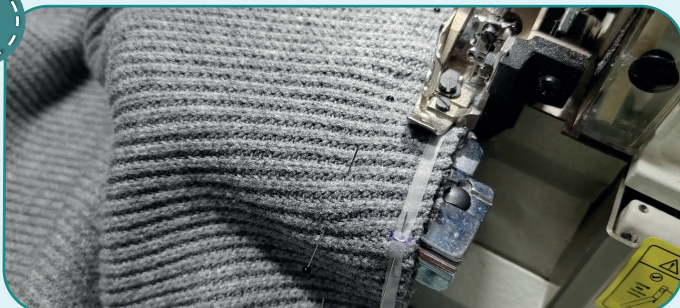
If you do not have a coverstitch machine, the flat seam can be performed with a) a twin needle on a sewing machine, b) decorative stretch seam on a sewing machine, c) finish the seams with serger and stitch them with a straight stitch.



Turtleneck sweater construction



1



4



2,5-3,5



7

Pin the front and the back along the shoulder edges with right sides together. Measure the shoulder length on the pattern with seam allowances, cut the silicone tape with this length + 40 mm or 1 9/16" (these are free tails about 20 mm or 13/16" long at both ends). Serge the shoulder seams. Serge on the back side, tucking the tape under the presser foot. You may have to shape the knit fabric a bit (equalize the edges length with the tape length), as it stretches. Press the seam allowances flat towards the front.

2



4



2,5-3,5



7

With right sides together, pin the sleeve into the armhole, aligning all the marks. Serge it in place. Press the seam allowances towards the sleeve. Repeat the process for the other sleeve.

3



4



2,5-3,5



7

Pin the back with the front and the sleeve along the side edge with right sides together. Serge the pieces. To avoid bulk, place the sleeve attaching seam allowances in different directions. Press the seam allowances towards the front. Repeat the process for the opposite side seam.

NOTE. It is recommended to try it on, check the fit, length and ease at this step. When fitting, consider the cuffs and the hem band length and width.

TURTLENECK SWEATER CONSTRUCTION



4



4

2,5-3,5

7

7

With right side inside, fold the hem band in half, lengthways, and pin along the short edges. Serge it.

5



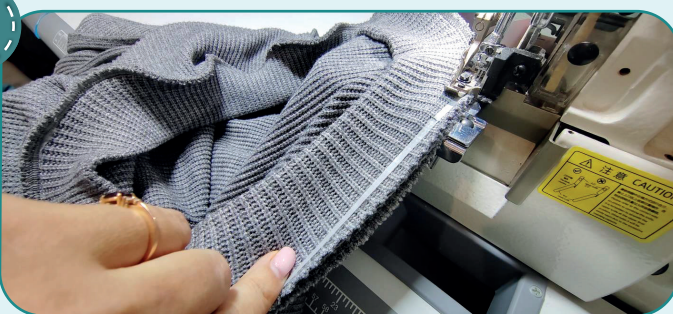
To avoid bulk when stitching the hem band, press the seam allowance ends in different directions.

6



Fold the hem band in half, wrong side inside, and press it.

7



4

2,5-3,5

7

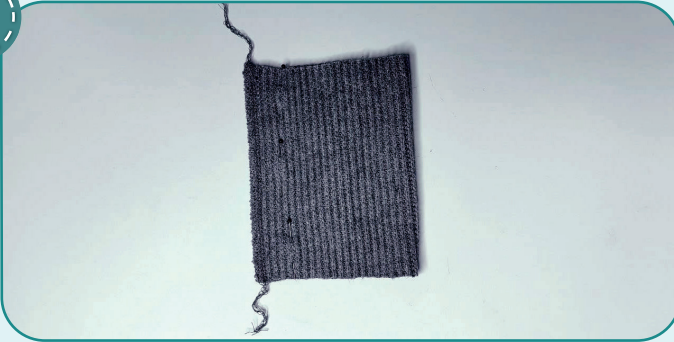
7

The hem band seam and the garment side seam are aligned, as are the marks with the garment opposite side seam, the front and back centers. Cut the silicone tape with the length equal the garment lower hem length (according to the paper pattern). Divide it into 4 equal parts by marks, then align these marks with the side seams and the centers of the front and back. Serge the hem band, placing the silicone tape under the presser foot. When attaching the hem band, evenly stretch it, but avoid stretching the garment lower edge. Press the seam allowances upward.

TURTLENECK SWEATER CONSTRUCTION



8



4



2,5-3,5



7

Fold the cuffs in half, right side inside, and pin them along the short edges. Serge them. Press the seam ends in different directions.

9



With wrong side inside, fold the cuffs in half, lengthways, and press them.

10



4



2,5-3,5



7

Serge the cuff to the sleeve, aligning the cuff seam and the sleeve seam. When attaching the cuff, evenly stretch it, but avoid stretching the sleeve lower edge. Repeat the process for the other cuff. Press the seams upward.



11



4



2,5-3,5



7

With right sides inside, fold the collar in half, lengthways, and pin along the short edges. Serge it. Press the seam allowance ends in different directions. Aligning the edges, fold the collar in half, lengthways, with wrong side inside.

TURTLENECK SWEATER CONSTRUCTION



12



4

2,5-3,5

7

7

Turn the garment to the wrong side and insert the collar in it. Align the collar seam with the back center, the collar center with the front center. Align the remaining marks with the shoulder seams. Pin mark these places. Cut a piece of silicone tape equal to the length of the back neck.

Serge the collar to the garment. Sew from the back and front pieces side; along the back neck - placing the silicone tape under the presser foot. While serging, stretch the collar evenly, but avoid stretching the garment neck. Press the seams downward.

13



Remove the basting stitches, trim and hide the thread tails, and press the garment once again. The sweater is ready!

ELINA PATYKOVA
ВЫКРОЙКИ

Turtleneck sweater

Thank you for joining my
team and me!
Share your works in my
groups. Hope you will stay
with us for our next project!

