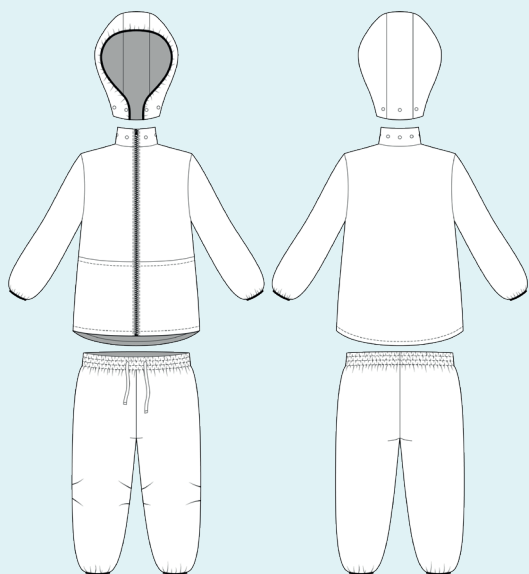


ELINA PATYKOVA
ВЫКРОЙКИ

Instructions
for sewing

Softshell suit

#патыкова_софтшелл



Skill level



Materials and notions



- softshell fabric
- jacket zipper
- elastic 30 mm (1 3/6") wide
- elastic edging ribbon 20 mm (13/16") wide
- Alfa snaps 12,5 mm (1/2") - 7 pcs
- cord
- eyelets 8 mm (5/16") - 2 pcs
- matching thread
- 80-90 Universal, 80-90 Microtex or Stretch 80-90 needles

If you are not sure about the fit of the garment, it is recommended to sew a muslin with similar properties (elasticity, thickness, drape) first. This will allow you

to adjust the length, width and fit of the garment and save time.

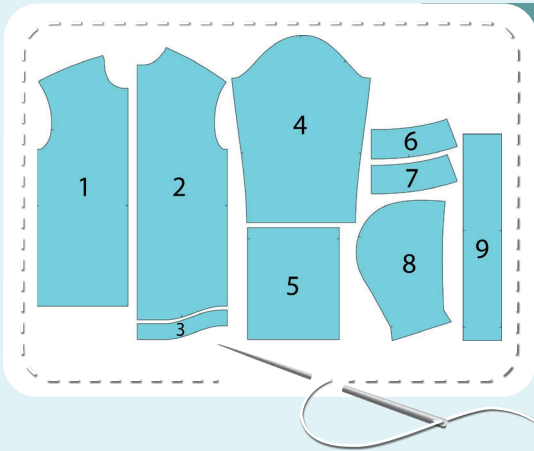


To find out how long a piece of fabric to take, you should place the pattern pieces onto the table, the floor or bedspread, pre-measured width equal to half the width of the selected fabric. Place the pieces, caring the direction of the grain line, their number, i.e., the way you will place them when cutting. Measure the length of the pattern pieces fit, add to this length 5% for the fabric shrinkage - this will be the required amount of fabric for the project. The elastic, elastic edging ribbon and zipper length is indicated on the pattern. Note: if the width of the fabric differs from the one specified in the table, the length of the cut is likely to be different. If the fabric contains

cotton, then the piece of the fabric must be sanforized: steam iron it through the pressing cloth (a piece of cotton fabric). Select the temperature mode using a scrap of the main fabric. How to cut: Print and glue all the paper patterns. When printing, do not forget to check the size of the test square. Put the paper pattern pieces onto the fabric. It is important to check that the grain is straight. Pin the paper pattern pieces to the fabric gently and cut the fabric along outline. Note: seam allowances are already included. Transfer all the necessary marks from the pattern onto the wrong side of your fabric.

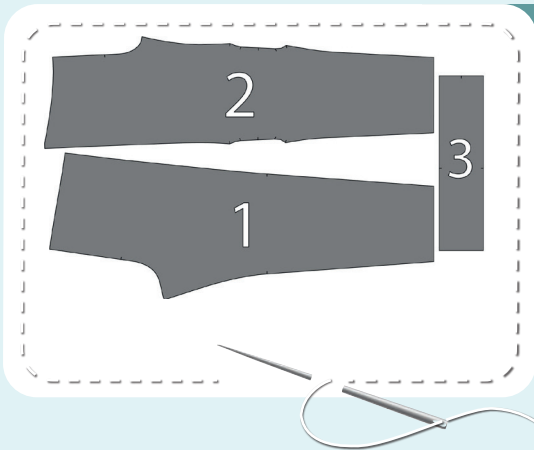


Now you have



JACKET PIECES:

1. front - cut 2
2. back - cut 1 on the fold
3. back lower hem facing - cut 1 on the fold
4. sleeve - cut 2
5. patch pocket - cut 2
6. outer stand collar - cut 1 on the fold
7. inner stand collar - cut 1 on the fold
8. hood side piece - cut 2
9. hood center piece - cut 1



PANTS PIECES (SOFTSHELL FABRIC):

1. back - cut 2
2. front - cut 2
3. waistband - cut 1 on the fold

Construction

Symbols



straight stitch



the stitch length in (mm)



flat lock stitch



zigzag stitch



the stitch width in (mm)



3-Step Zigzag Seam Finishing



unilateral zipper presser foot



universal presser foot



invisible zipper presser foot



pinning

You should lockstitch the seam and trim the thread tails or tie the seam thread tails and hide them into the seam after sewing a serger stitch or cover seaming chain stitch.



double welting (piping) presser foot



3-thread serger stitch



4-thread serger stitch

NOTE

A

4-thread serger stitch

If you do not have a serger, you can use stretch stitches available on your sewing machine, or at least, a zigzag stitch.

B

3-thread serger stitch

If you do not have a serger, you can replace it with an overedge stitch, or a zigzag stitch.

C

flat lock stitch

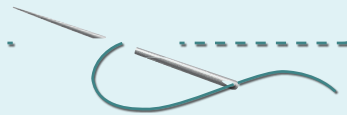
If you do not have a coverstitch machine, the flat seam can be performed with a) a twin needle on a sewing machine, b) decorative stretch seam on a sewing machine, c) finish the seams with serger and stitch them with a straight stitch.



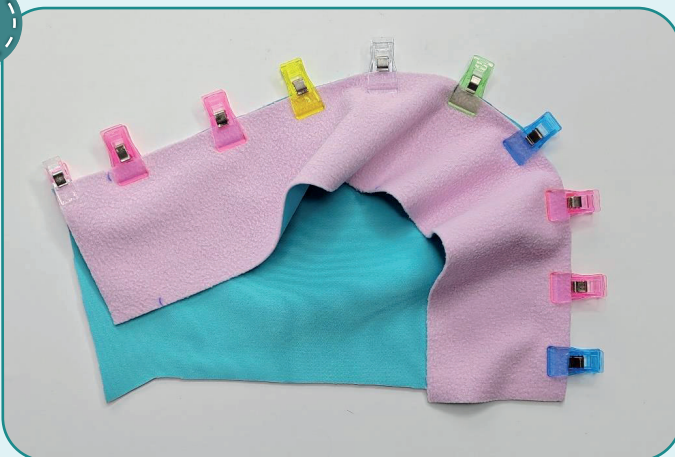
Jacket construction



NOTE. Softshell fabric is not recommended to be exposed to high temperatures to avoid property loss, so do not use WTO when sewing. You can finish the edges with a serger, as it is done in this garment, or leave them as they are. You can also use pinking shears instead. There may be puncture marks on the softshell fabric, so try to do without ripping. It would be better to avoid basting. You can use sewing clips as an alternative to hand-basting. If you cannot avoid basting, baste then, leaving 1-2 mm (1/16") away from the seam (closer to the edge). To choose a better needle, check them on the scrap of fabric before you start.



1



With right sides together, pin the hood side and center pieces, aligning the marks.

2



Stitch the pieces 10 mm (3/8") in from the edge. Repeat the process for the opposite hood side piece.



JACKET CONSTRUCTION

3



2,5-3

Bind the hood seam allowances with a piece of elastic edging ribbon (do not stretch it). Pre-fold the elastic edging ribbon in half, pin or baste it on. Stitch it 1 mm (1/16") away from the edge. Make sure that the seams are even on both sides. Instead of it you can trim the seam allowances with pinking shears or finish them with a three-thread serger stitch.



4



2,5-3

Stitch the seam allowances onto the hood center piece 1 mm (1/16") away from the seam.

5



2,5-3

Bind the hood lower edge with a piece of elastic edging ribbon (do not stretch it).

JACKET CONSTRUCTION



6



Clip V-shapes of the seam allowances exactly where the fold line will be, leaving 1 mm (1/16") before the stitching.

7



Fold the hood lower edge to the wrong side along the fold line. Transfer the marks for the snaps onto the hood. Punch 2 mm (1/16") holes with a Hole Punch or scissors. Attach caps and sockets (except for the two outermost ones) using a press.

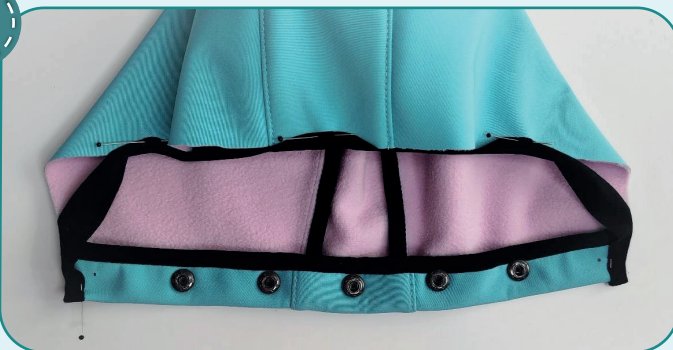
8



2,5-3

Stitch the fold ends with straight seams 3-4 mm (1/8") in from the edge.

9



Cut a piece of elastic edging ribbon, its length indicated on the hood side pattern. Put marks on it, dividing it into 4 equal parts. Divide the hood outer edge into 4 equal parts as well. Pin the elastic edging ribbon (folded in half) to the hood outer edge aligning the marks. Tuck the ribbon end inside at 5 mm (3/16").

10



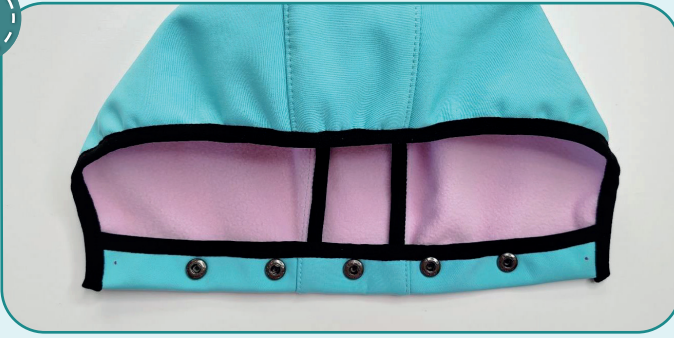
Pin or baste the ribbon along the hood entire outer edge slightly stretching it.



JACKET CONSTRUCTION



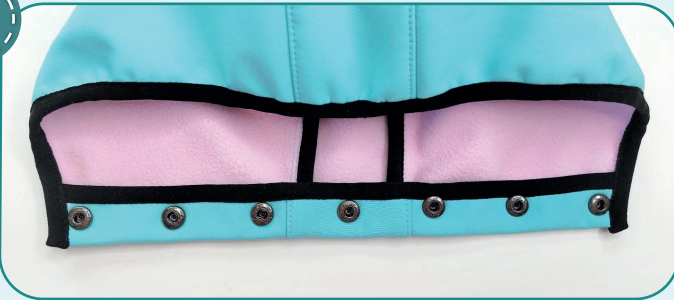
11



2,5-3

Bind the hood outer edge. Stitch the elastic edging ribbon 1 mm (1/16") away from its edge. Make sure the stitching is the same distance on both sides.

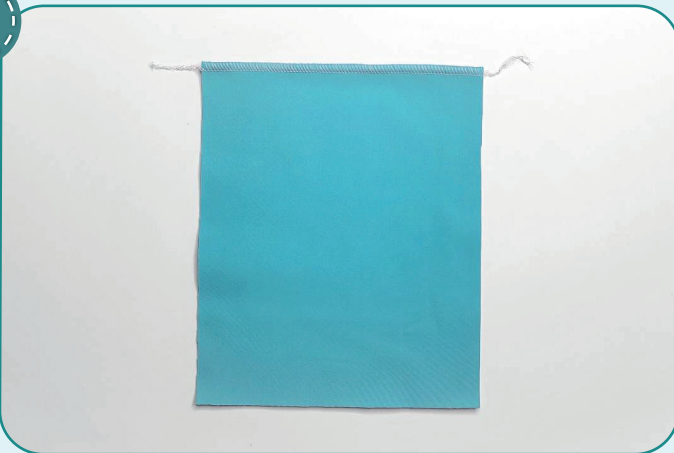
12



Attach caps and sockets of outermost snaps.



13



3-4



7

Finish the pocket top edge with the serger.

14

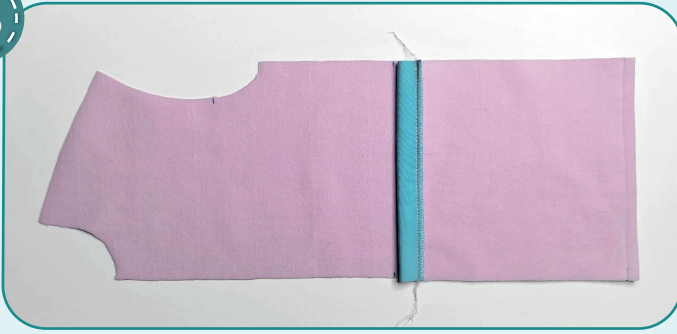


2,5-3

Fold the pocket top edge at 25 mm (1") and affix it with sewing clips. Stitch it 20 mm (13/16") in from the fold.

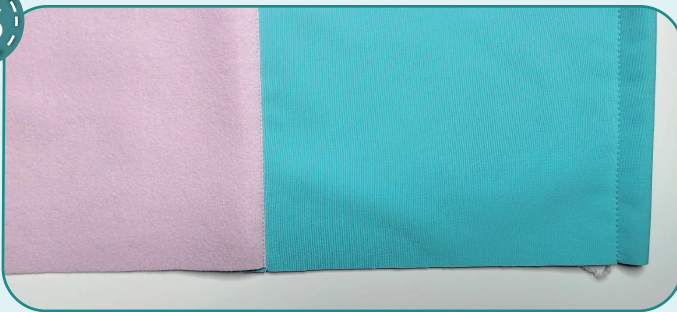
JACKET CONSTRUCTION

15



Place the pocket right side to the front wrong side. Align the lower edges. Stitch them 10 mm (3/8") in from the edge.

16



Bend the pocket down. Edgestitch the seam allowance up the front 1 mm (1/16") away from the attaching seam.

17



Trim the corners.

18



Fold the pocket to the right side of the front. Affix along the side and center edges with straight stitches 5-6 mm (3/16 - 1/4") away from the edge.

19

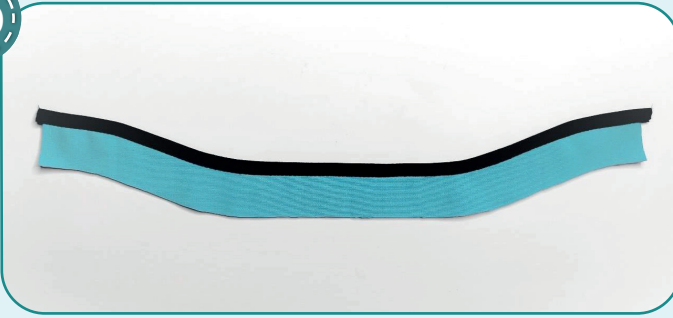


Topstitch the lower hem 20 mm (13/16") away from the edge. Repeat the process for the other pocket (steps 13-19).

JACKET CONSTRUCTION



20



2,5-3

Bind the back lower hem facing with a piece of elastic edging ribbon (do not stretch it). Instead of it, you can trim the seam allowances with pinking shears or finish them with a three-thread serger stitch.

21



2,5-3

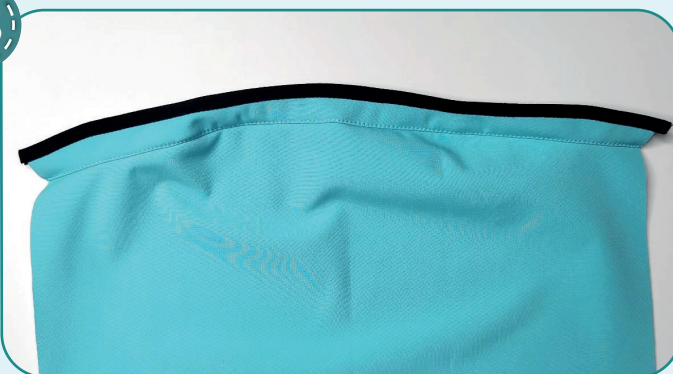
With right sides together, pin the back and the back lower hem facing along the lower edge. Stitch them 10 mm (3/8") in from the edge.

22



Slash the seam allowances every 15-20 mm (9/16-13/16") leaving 1 mm (1/16") before the stitching.

23



2,5-3

Stitch up the seam allowances onto the back lower hem facing 1 mm (1/16") in from the seam.

24



2,5-3

Pin the front and the back along the shoulder edges with right sides together. Stitch them 10 mm (3/8") in from the edge.

JACKET CONSTRUCTION



25



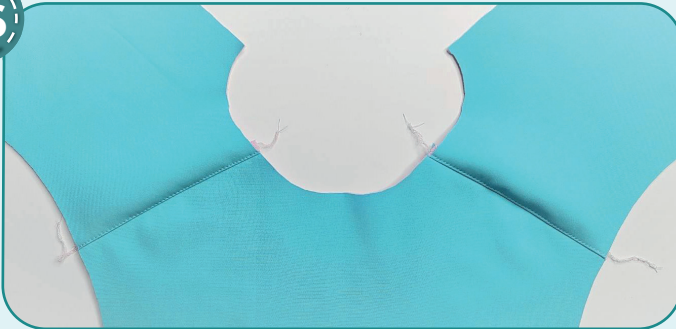
3

3-4

7

Finish the seam allowances with the serger.

26



2,5-3

2,5-3

2,5-3

2,5-3

Edgestitch the shoulder seam allowance up the front 1 mm (1/16") away from the attaching seam.

27



2,5-3

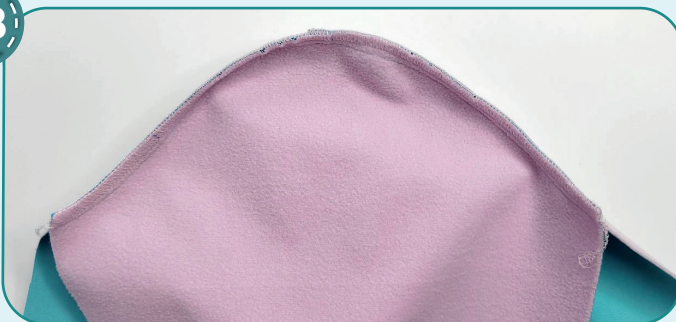
2,5-3

2,5-3

2,5-3

With right sides together, pin the sleeve into the armhole, aligning the marks. Slightly ease in the sleeve, i. e., equalize the edges. Stitch it 10 mm (3/8") in from the edge. Make sure that the sleeve is smooth, no folds are formed.

28



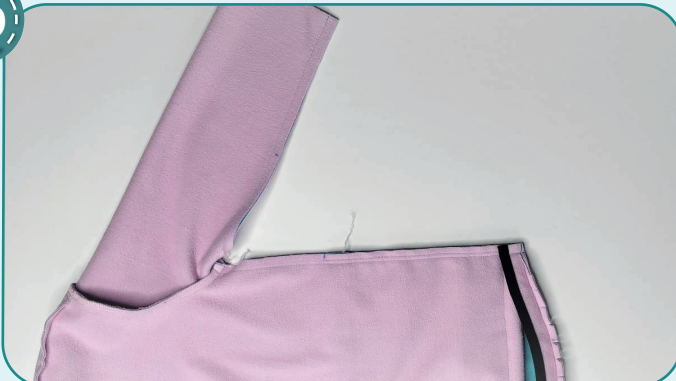
3

3-4

7

Use the serger to finish the edges together with one seam. Repeat the process for the other sleeve (steps 27-28).

29



2,5-3

2,5-3

2,5-3

2,5-3

Pin the back with the front along the side edge with right side inside. Pin the sleeve along the side edge with right side inside. Tuck the back lower hem facing around the front lower edge, i. e., the front lower edge should be placed between the back and its facing. Stitch the pieces 10 mm (3/8") in from the edge.



30



Use the serger to finish the edges together with one edge. Turn the facing out to the right side. Repeat the process for the other side seam (steps 29-30).

31



Finish the front center edges with a serger.

32



Topstitch the back lower hem between the side seams 20 mm (13/16") away from the edge.

33



Bind the inner stand collar lower edge with a piece of elastic edging ribbon (do not stretch it).

34



Transfer the marks for the snaps onto the outer stand collar. Punch 2 mm (1/16") holes with a Hole Punch or scissors. Attach snap studs and posts with a press.

35



Stitch the stand collar pieces along the upper edge with right sides together. Stitch them 10 mm (3/8") in from the edge.



JACKET CONSTRUCTION



36



Slash the seam allowances every 15-20 mm (9/16-13/16") leaving 1 mm (1/16") before the stitching.

37



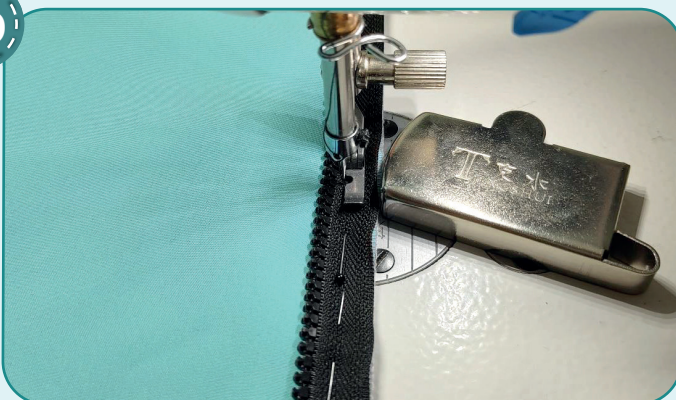
Stitch up the seam allowances onto the inner stand collar 1 mm (1/16") in from the seam.

38



Pin the stand collar outer piece into the garment neckline aligning the marks. Stitch the stand collar in place 10 mm (3/8") in from the edge. Stitch from the neckline side to avoid forming the folds.

39



Pin one zipper tape to the front center edge with right sides together. Place the zipper to sit accurately without pulling the fabric. The zipper bottom stop should be flush with the garment lower hem. Tuck the zipper top end to the wrong side (if need be, shorten the zipper to the desired length) and place it leaving 1-2 mm (1/16") before the stand collar inner piece attaching seam. Stitch the zipper using a unilateral zipper presser foot 10 mm (3/8") away from the edge.

JACKET CONSTRUCTION

40



Close the zipper and draw the marks for the stand collar attaching seam and the pocket upper edge.

41



Pin the other zipper tape to the opposite front piece with right sides together. Align the marks with the stand collar attaching seam and the pocket upper edge. Place the upper fold of the zipper tape 1 mm (1/16") below the inner stand collar attaching seam. Stitch the zipper 10 mm

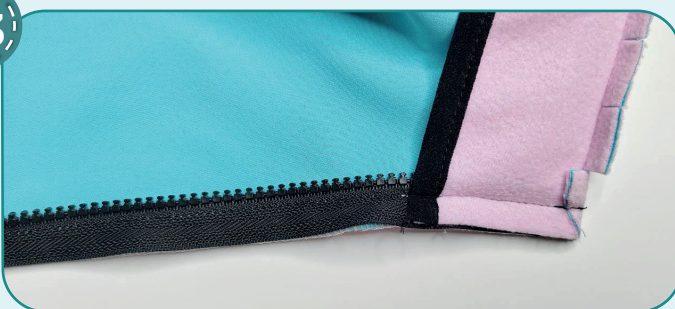
(3/8") in from the edge. Close the zipper and make sure that the pocket, the garment lower hem and the stand collar attaching seams match.

42



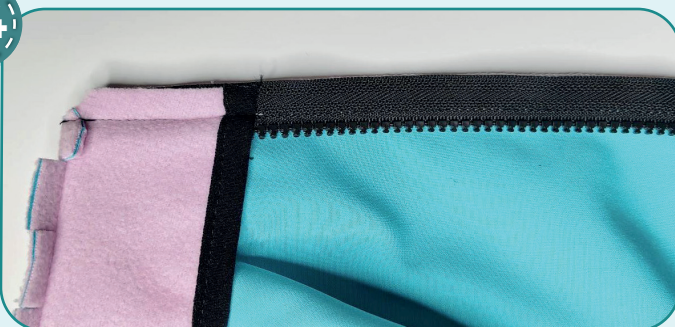
Trim the corners of the seam allowances and slash the neckline seam allowances every 15 mm (9/16") leaving 1 mm (1/16") before the stitching.

43



Pin the inner stand collar center edges to the zipper with the wrong side facing out. Stitch them 10 mm (3/8") in from the edge.

44



Trim the corners.

JACKET CONSTRUCTION



45

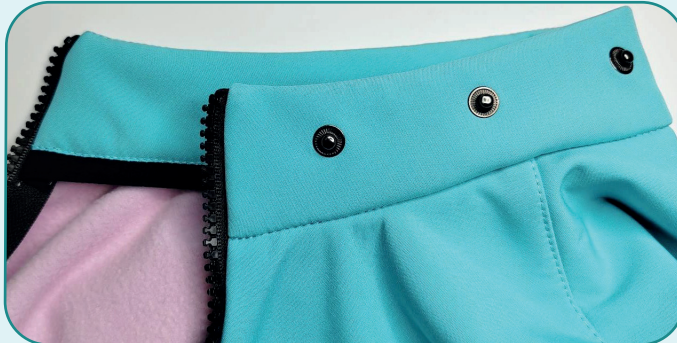


Turn the stand collar out to the right side. Pin the inner collar lower edge to have the neckline seam allowances hidden inside the stand collar and the stand collar itself lies flat.

46



Stitch the inner stand collar lower edge in place. Working from the right side, topstitch around the stand collar (exactly atop the stand collar attaching seam). Make sure, that stitching is fine on the wrong side and the inner stand collar lower edge got into the seam all around.



47



Topstitch the zipper 5 mm (3/16") away from the front edge.

48



Cut a piece of the elastic edging ribbon with the length indicated on the sleeve paper pattern. Stitch the elastic in a ring 5 mm (3/16") in from the edges.



49



2,5-3

Align the seams of the sleeve and the elastic edging ribbon. Bind the sleeve lower hem, stretching the elastic edging ribbon. Repeat the process for the other sleeve.

50



Remove the basting stitches, trim the thread tails. The jacket is ready!



Pants construction



1



2,5-3

Working from the right side, make two folds facing each other on the pant fronts. Stitch them 5 mm (3/16") in from the edge.



2



2,5-3

Pin the front and back pieces along the inseams and the side seams. Stitch them 10 mm (3/8") in from the edge.

3



3-4



7

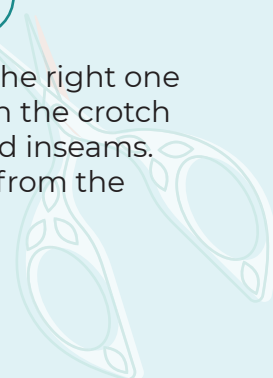
Finish the inseams and side seams with the serger.

4



2,5-3

Insert the left pant leg into the right one with right sides together. Pin the crotch seam aligning the marks and inseams. Stitch them 10 mm (3/8") in from the edge.



PANTS CONSTRUCTION



5



3

3-4

7

Finish the crotch seam allowances with the serger.

6



Focusing on the marking, use the press to attach two eyelets 8 mm (5/16") onto the pants waistband.

7



↺

3-4

↺

2,5-3

Fold the waistband in half with right side inside and pin along short edges. Stitch the waistband in a ring with two straight stitching 50 mm (2") and 15 mm (9/16"), leaving a hole for threading the elastic.

8



↺

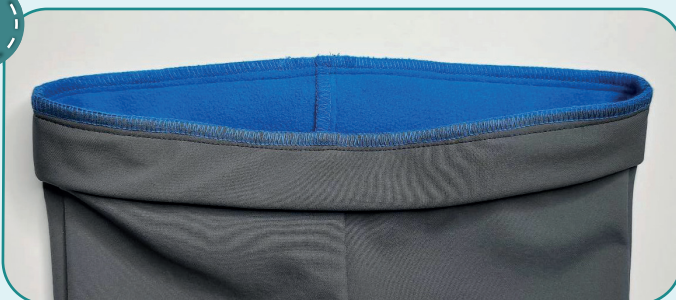
3-4

↺

2,5-3

With right sides together, pin the waistband to the garment upper edge aligning the waistband seam with the garment back crotch seam, waistband center with the front crotch seam and the marks with the side seams. Stitch them 10 mm (3/8") away from the edge.

9



3

3-4

7

Finish the seam allowances with the serger.

PANTS CONSTRUCTION

10



Cut the elastic 30 mm (1 3/16") wide and the length indicated on the waistband pattern. Thread it through the hole with a safety pin or a bodkin.

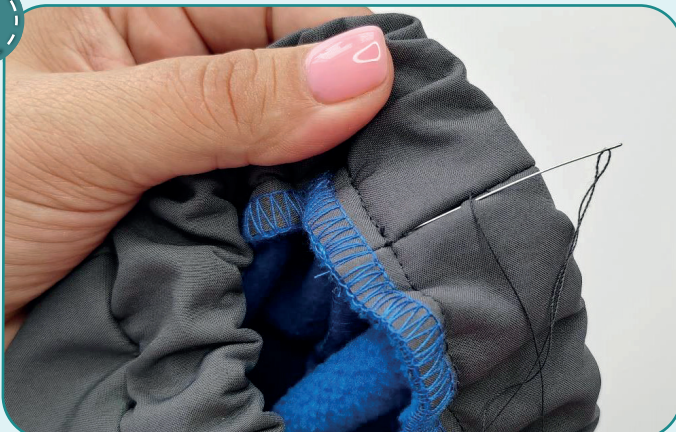
11



Join the ends of the elastic together by straight or zigzag stitch. Spread the elastic evenly along the waistband.

NOTE. It is recommended to try it on, check the fit, length and ease. Make sure the waistband is comfortable to wear. If need be, change the length of the elastic.

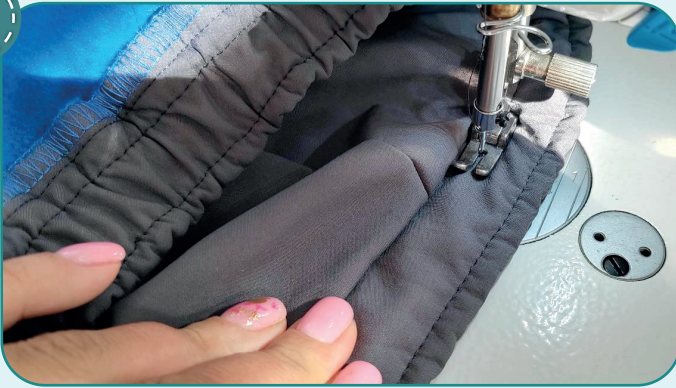
12



Sew the hole in the waistband with a blind stitch.



13



2,5-3

Evenly stretching the elastic, stitch two parallel seams 7 mm (5/16") away from the waistband edge and the attaching seam.



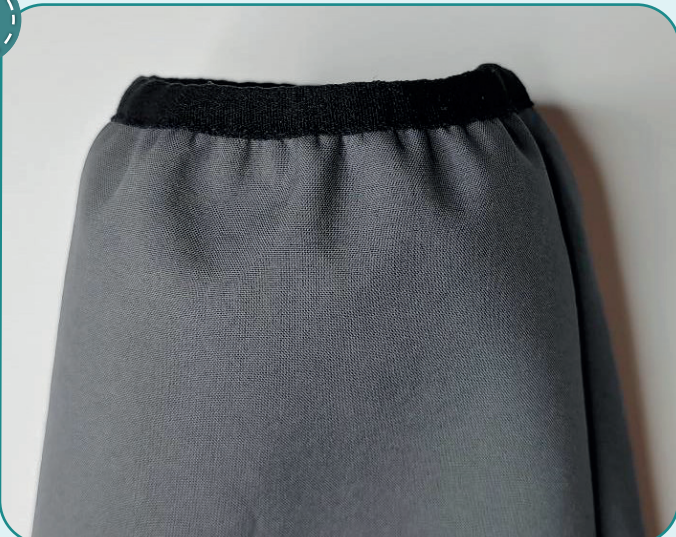
14



2,5-3

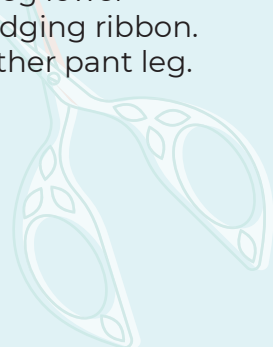
Cut a piece of the elastic edging ribbon with the length indicated on the pants back paper pattern. Stitch the elastic in a ring 5 mm (3/16") in from the edges.

15



2,5-3

Align the inseam and the elastic edging ribbon seam. Bind the pant leg lower hem, stretching the elastic edging ribbon. Repeat the process for the other pant leg.





16



Thread the cord into the waistband. Remove the basting stitches, trim the thread tails. The pants are ready.



ELINA PATYKOVA
ВЫКРОЙКИ

Softshell suit

Thank you for joining my
team and me!
Share your works in my
groups. Hope you will stay
with us for our next project!

