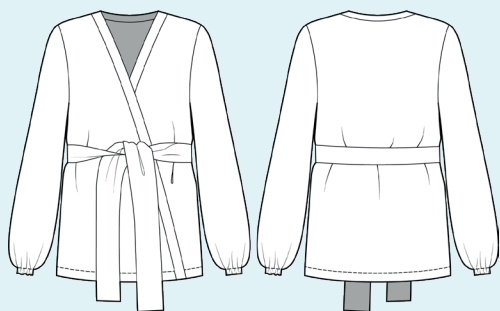


ELINA PATYKOVA
ВЫКРОЙКИ

Instructions
for sewing

Kimono

#патыкова_кимоно



Skill level



Materials and notions



- muslin
- fusible interfacing with a density of 45-50 g/m²
- elastic 8 mm (5/16") wide
- matching thread
- Universal 80 needles.

If you are not sure about the fit of the garment, it is recommended to sew a muslin with similar properties (elasticity, thickness, drape) first. This will allow you

to adjust the length, width and fit of the garment and save time.

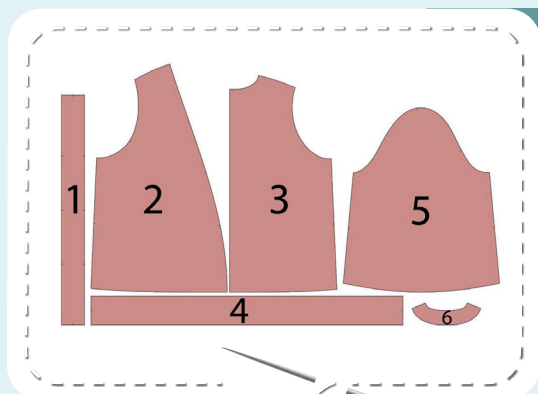


To find out how long a piece of fabric to take, you should place the pattern pieces onto the table, the floor or bedspread, pre-measured width equal to half the width of the selected fabric. Place the pieces, caring the direction of the grain line, their number, i.e., the way you will place them when cutting. Measure the length of the pattern pieces fit, add to this length 5% for the fabric shrinkage - this will be the required amount of fabric for the project. Before beginning your sewing project, wash the fabric in warm

water, dry and iron it. Print and glue the paper patterns. When printing, do not forget to check the size of the test square. Preparation and cutting: Put the paper pattern pieces onto the fabric. It is important to check that the grain is straight. Pin the paper pattern pieces to the fabric gently and cut the fabric along outline. Note, seam allowances are already included. Transfer all the marks from the pattern onto the wrong side of your fabric.

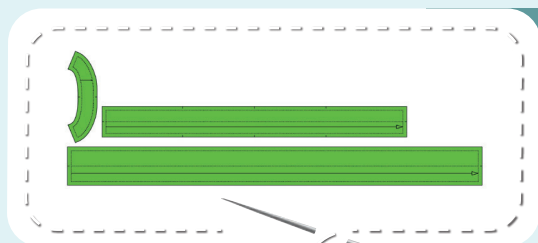


Pieces



KIMONO PIECES:

1. front placket - cut 2 (cut rough)
2. front - cut 2
3. back - cut 1 on the fold
4. tie belt - cut 2 (cut rough)
5. sleeve - cut 2
6. back neckband - cut 2 (cut rough)



PIECES TO INTERFACE

- Green - fusible interfacing
 - front plackets and back neckband (2 pieces each)
 - tie belt (both pieces)

Construction

Symbols



straight stitch



the stitch length in (mm)



flat lock stitch



zigzag stitch



the stitch width in (mm)



3-Step Zigzag Seam Finishing



unilateral zipper presser foot



universal presser foot



invisible zipper presser foot



pinning

You should lockstitch the seam and trim the thread tails or tie the seam thread tails and hide them into the seam after sewing a serger stitch or cover seaming chain stitch.



double welting (piping) presser foot



3-thread serger stitch



4-thread serger stitch

NOTE

A

4-thread serger stitch

If you do not have a serger, you can use stretch stitches available on your sewing machine, or at least, a zigzag stitch.

B

3-thread serger stitch

If you do not have a serger, you can replace it with an overedge stitch, or a zigzag stitch.

C

flat lock stitch

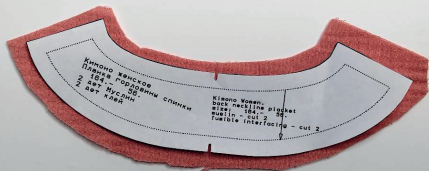
If you do not have a coverstitch machine, the flat seam can be performed with a) a twin needle on a sewing machine, b) decorative stretch seam on a sewing machine, c) finish the seams with serger and stitch them with a straight stitch.



Kimono construction

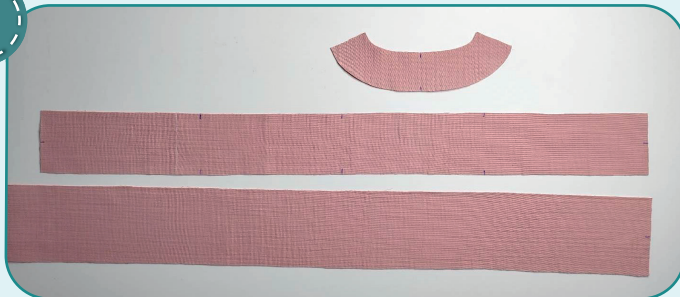


1



Tie belt, front plackets and back neckband are cut rough. It means you should make the seam allowances 10-15 mm (3/8-9/16") wider. You should do this because after fusing the interfacing the piece can shrink significantly. Duplicate the pieces.

2



Cut the tie belt, front plackets, and back neckband exactly along the patterns and transfer the marking.

3



Pin the back to the front pieces along the shoulder and side edges with right sides together. Stitch the pieces 10 mm (3/8") in from the edge.

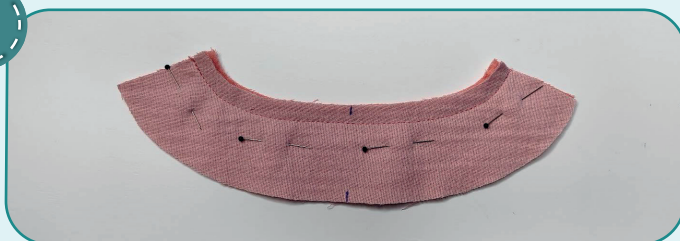
NOTE. If you lack experience, it is better to hand-baste first.

4



Finish the shoulder and side seams with a 3-thread serger stitch. Press the seam allowances towards the front.

5

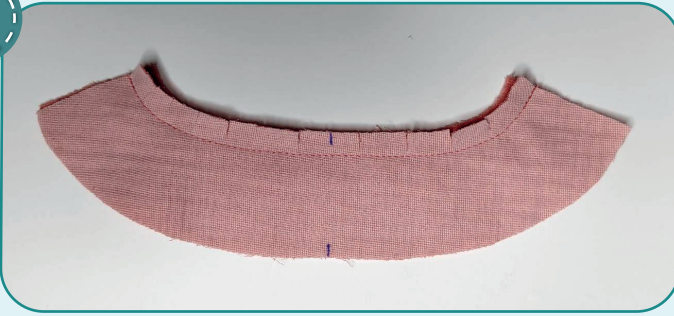


Pin the back neckband pieces along the upper edge with right sides together. Stitch them 10 mm (3/8") in from the edge.

KIMONO CONSTRUCTION

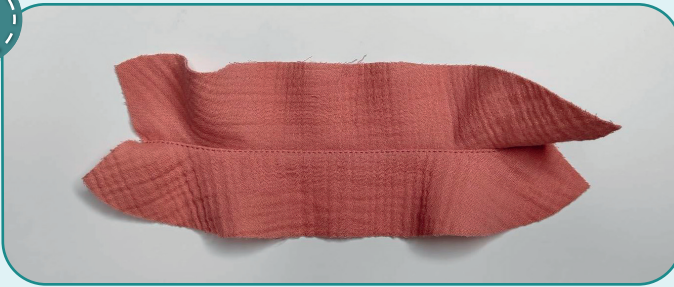


6



Slash the seam allowances every 10-15 mm (3/8-9/16") leaving 1 mm (1/16") before the stitching.

7



2,5-3

Edgestitch the seam allowances onto one of the back neckband pieces 1 mm (1/16") away from the seam. The piece that we are stitching on will be the under neckband.

8



2,5-3

Pin the back neckband to the front plackets with right sides together. Stitch the pieces 10 mm (3/8") in from the edge.

9



Trim the corners. Press the seam allowances open.

10



2,5-3

Fold the placket in half, lengthways. Stitch it along the lower edge 10 mm (3/8") in from the edge.

11



Trim the corners. Repeat the same steps with the other placket (steps 10-11).

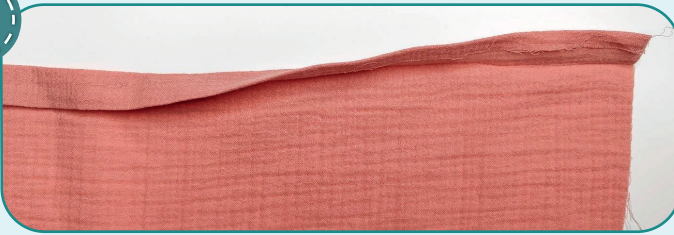


12



Turn the plackets out to the right side and press them.

13

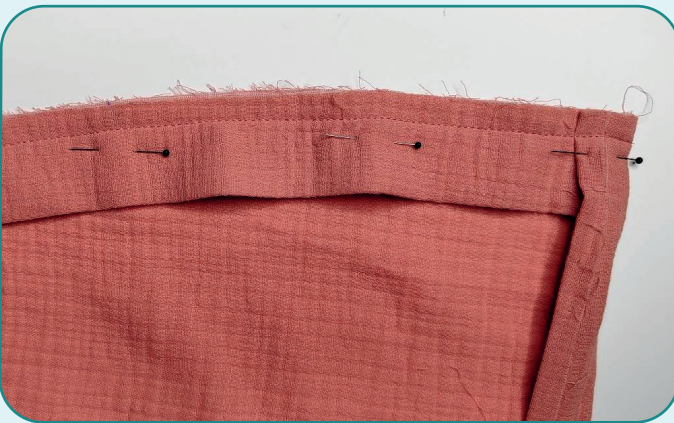


Press the garment lower hem to the wrong side first by 10 mm (3/8"), then by 20 mm (13/16").

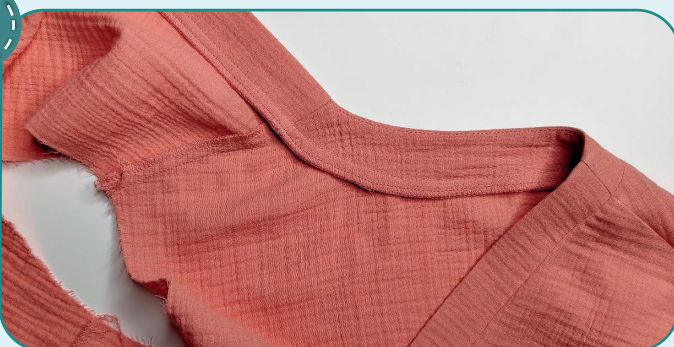
14



With right sides together, pin the placket to the garment aligning the shoulder seams and the marks. Fold the lower seam allowance to the right side atop the placket. Stitch it in place 10 mm (3/8") in from the edge. Sew slowly, and care there are no creases formed.



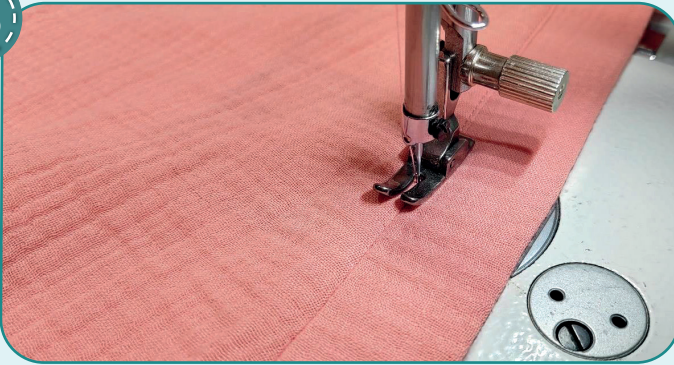
15



Finish the seam allowances with a serger. Fold the garment lower seam allowance to the wrong side. Press the seam allowances towards the front and the back.



16



Edgestitch the placket along the entire length 1 mm (1/16") away from the attaching seam. Press it.



17



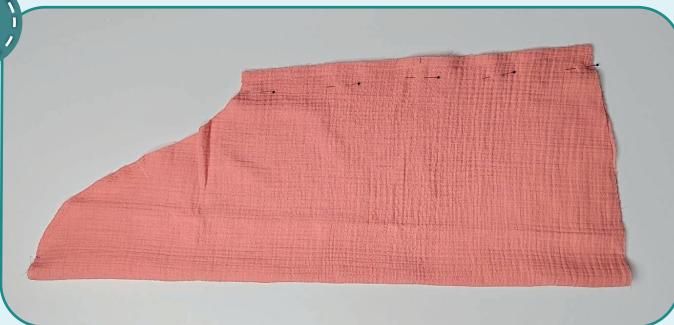
Topstitch along the garment lower hem 19 mm (3/4") away from the edge. Press it.

18



Work two rows of long stitches around the sleeve cap 6 mm (1/4") and 4 mm (1/8") in from the edge. Set maximum stitch length at 4-5 mm (3/16"), do not backstitch and leave the thread tails at least 50 mm (2") long at both sides of the seams.

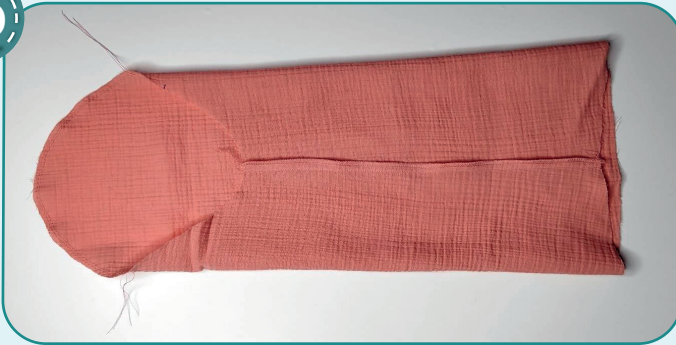
19



Pin the sleeve along the side edges with right side inside. Stitch the pieces 10 mm (3/8") in from the edge.



20



Finish the edges with a 3-thread serger stitch. Press the seam allowances towards the front.

21



Pin the sleeve to the armhole with right sides together. Align the side seams and the marks. Now we see some excess fabric along the sleeve cap edge.

22



Pull up the gathers to make the sleeve cap fit the armhole. Use the thread tails of two rows of long stitches along the sleeve cap. Tie the thread tails. Evenly spread the folds along the sleeve cap, so that no crease marks are formed. Baste along the sleeve cap.

23



Stitch the sleeve into the armhole 10 mm (3/8") in from the edge. Stitch in, working from the sleeve side, make sure that no folds are formed along the sleeve cap.

24



Finish the seam allowances with a serger. Press the seam on the edge. Repeat the process for the other sleeve (steps 18-24).



25



Press the sleeve lower hem to the wrong side first by 5 mm (3/16"), then by 10 mm (3/8"). You can hand-baste the edges.

26



Topstitch along the sleeve lower hem 9 mm (3/8") in from the edge. Leave an opening about 20 mm (13/16") to thread the elastic. Press it.

27



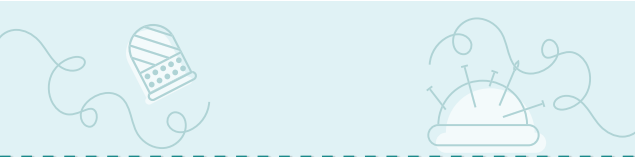
Cut the elastic 8 mm (5/16") wide and the length indicated on the sleeve pattern. Thread it through the opening with a safety pin or a bodkin.

28

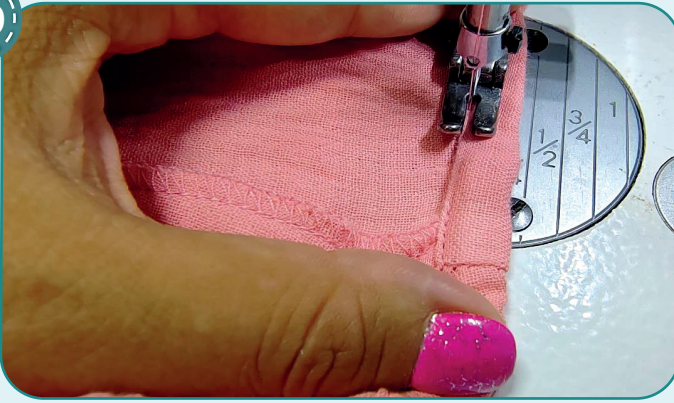


Stitch the elastic in a ring. Evenly spread the elastic along the sleeve hem.





29



Stitch the opening left, stretching the elastic and pulling the folds. Repeat the process for the other sleeve hem (steps 25-29).



30



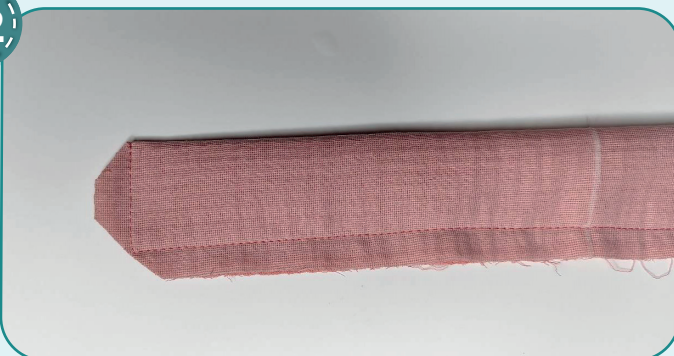
Pin the tie belt pieces along the short edges with right sides together. Stitch them 1 cm (3/8") in from the edge. Press the seams out.

31



Fold the tie belt in half, lengthways. Stitch it along the perimeter 1 cm (3/8") in from the edge. Leave an opening in the middle of it about 5 cm (2") long.

32

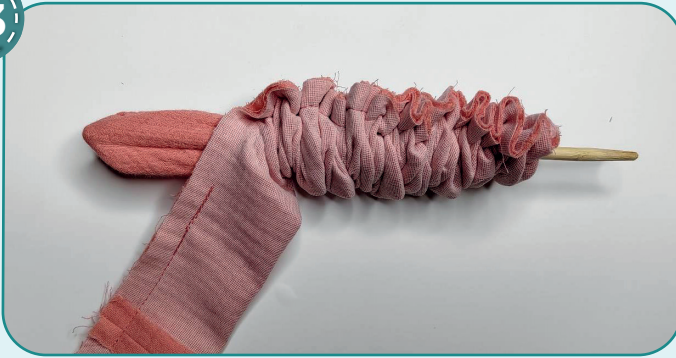


Trim the corners.





33



Turn the tie belt out with a pencil or a stick.

34



Smooth the corners and press it.

35



Hand-stitch the opening.

36



Remove the basting stitches, trim the thread tails, and press the garment. The kimono is ready!



ELINA PATYKOVA
ВЫКРОЙКИ

Kimono

Thank you for joining my team and me!
Share your works in my groups. Hope you will stay with us for our next project!

